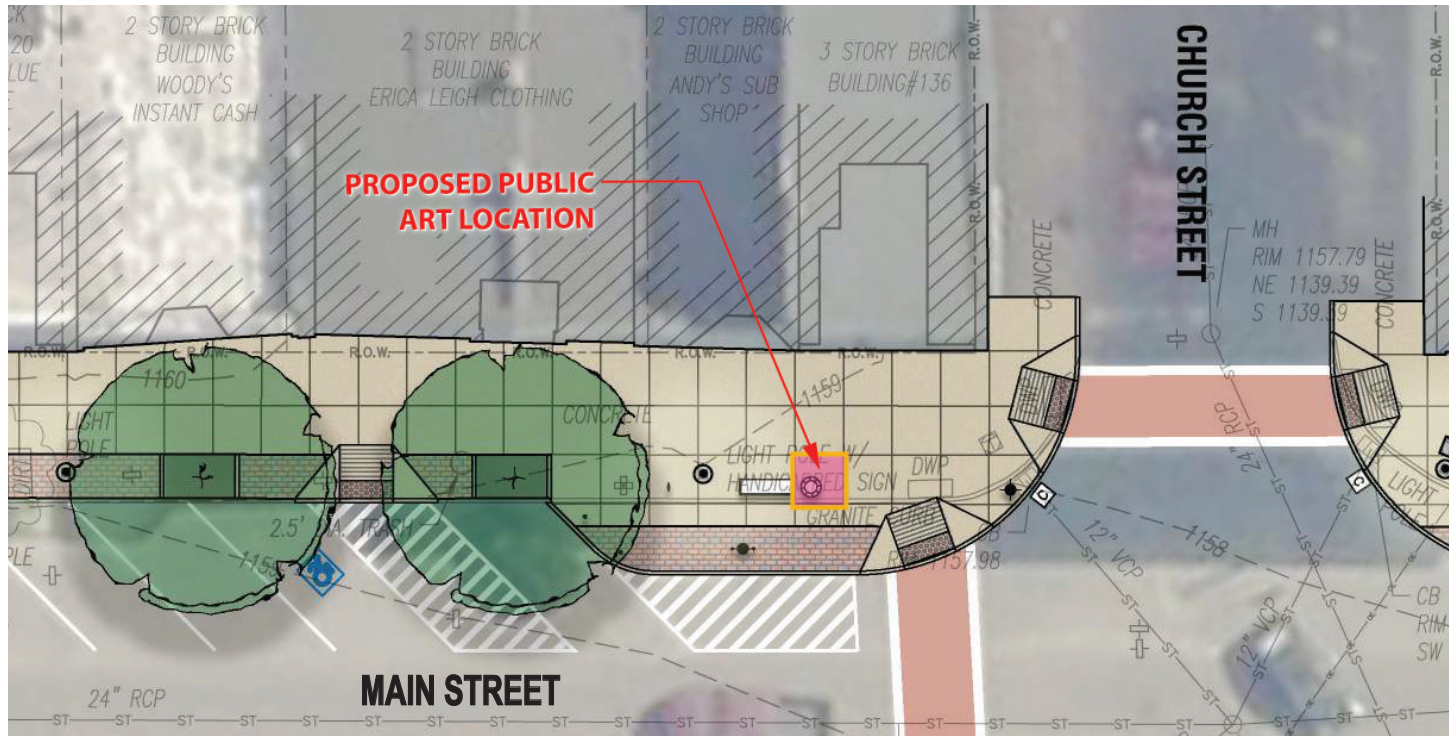


# City of Hornell Public Art Opportunities

## Public Art Opportunity #1:

### Northwest Corner of Main Street and Church Street



*Proposed location - conceptual design plan*

#### Potential art to consider:

- sculpture
- artistic lighting feature
- maximum working area: length and depth as appropriate for mounting on a 6' diameter base x 9' height



*Existing conditions (before proposed streetscape improvements)*

Molly Vendura Landscape Architect, PLLC

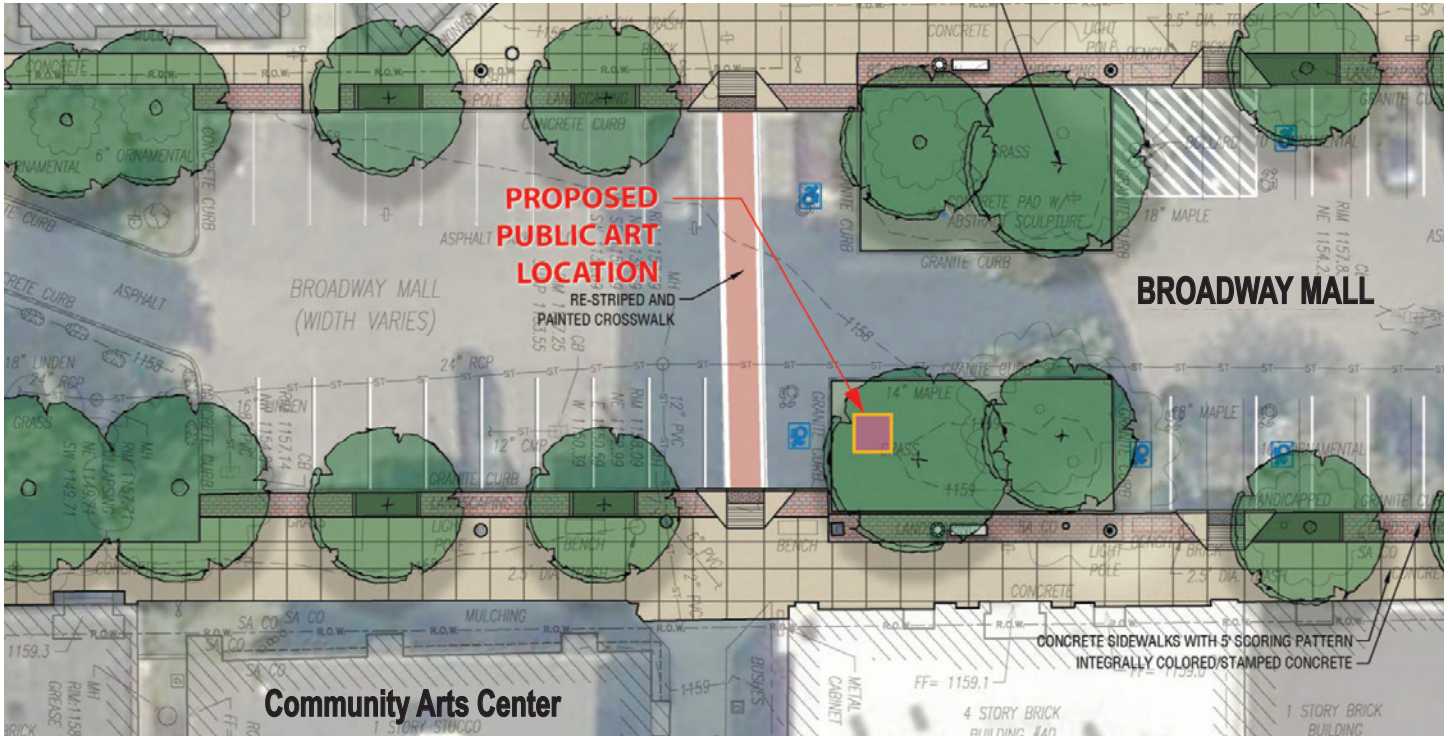
Planning | Landscape Architecture

PO Box 358, Orchard Park, NY 14127 (716) 880-6351



# City of Hornell Public Art Opportunities

## Public Art Opportunity #2: Broadway Mall adjacent to Community Arts Center



Proposed location - conceptual design plan

Potential art to consider:

- sculpture
- artistic lighting feature
- maximum working area: length and depth as appropriate for mounting on a 6' diameter base x 15.5' height

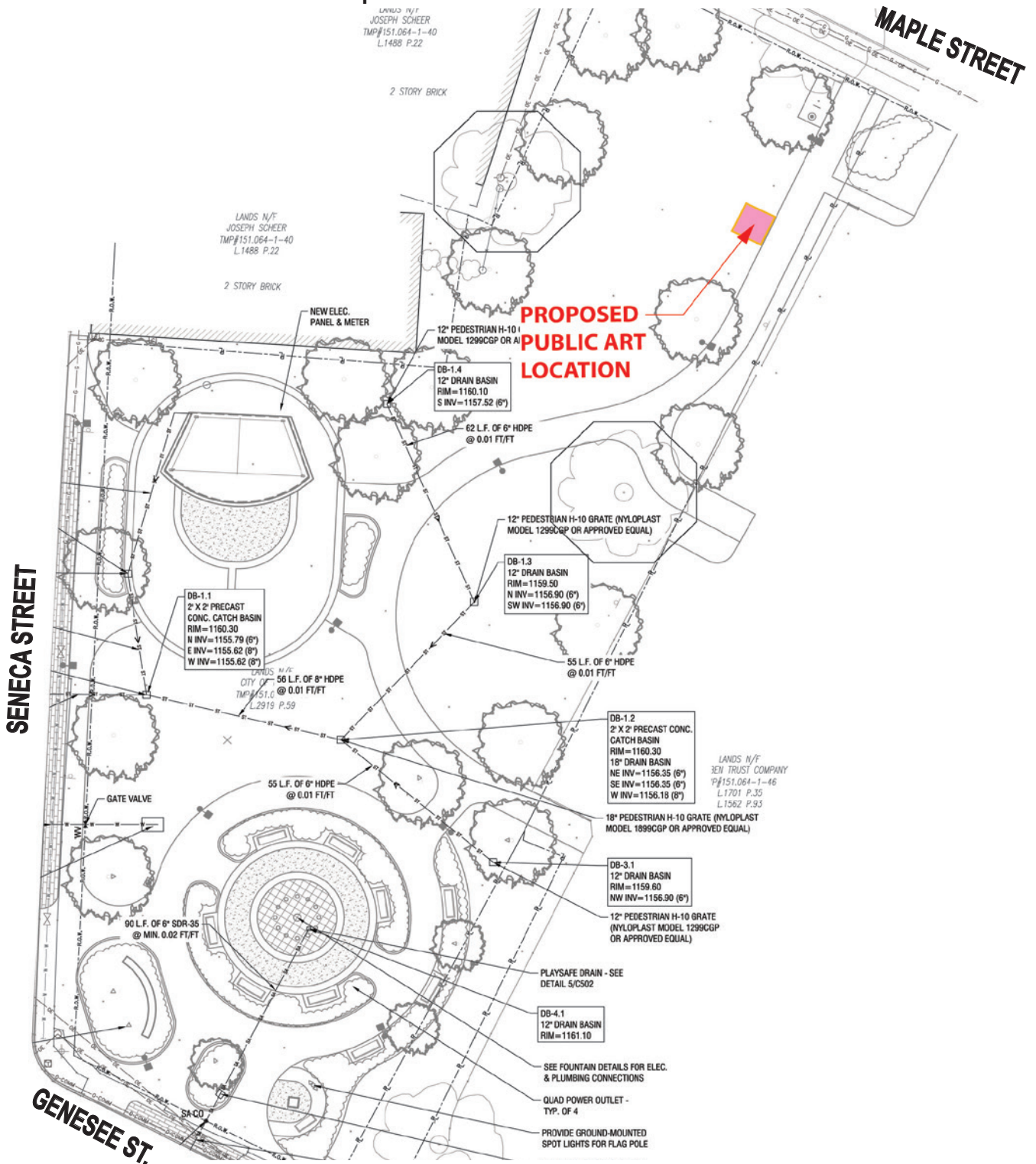


Existing conditions (before proposed alley improvements)



# City of Hornell Public Art Opportunities

## Public Art Opportunity #3: Northeast Section of Future Union Square Park



Proposed location - conceptual design plan

Desired artwork:

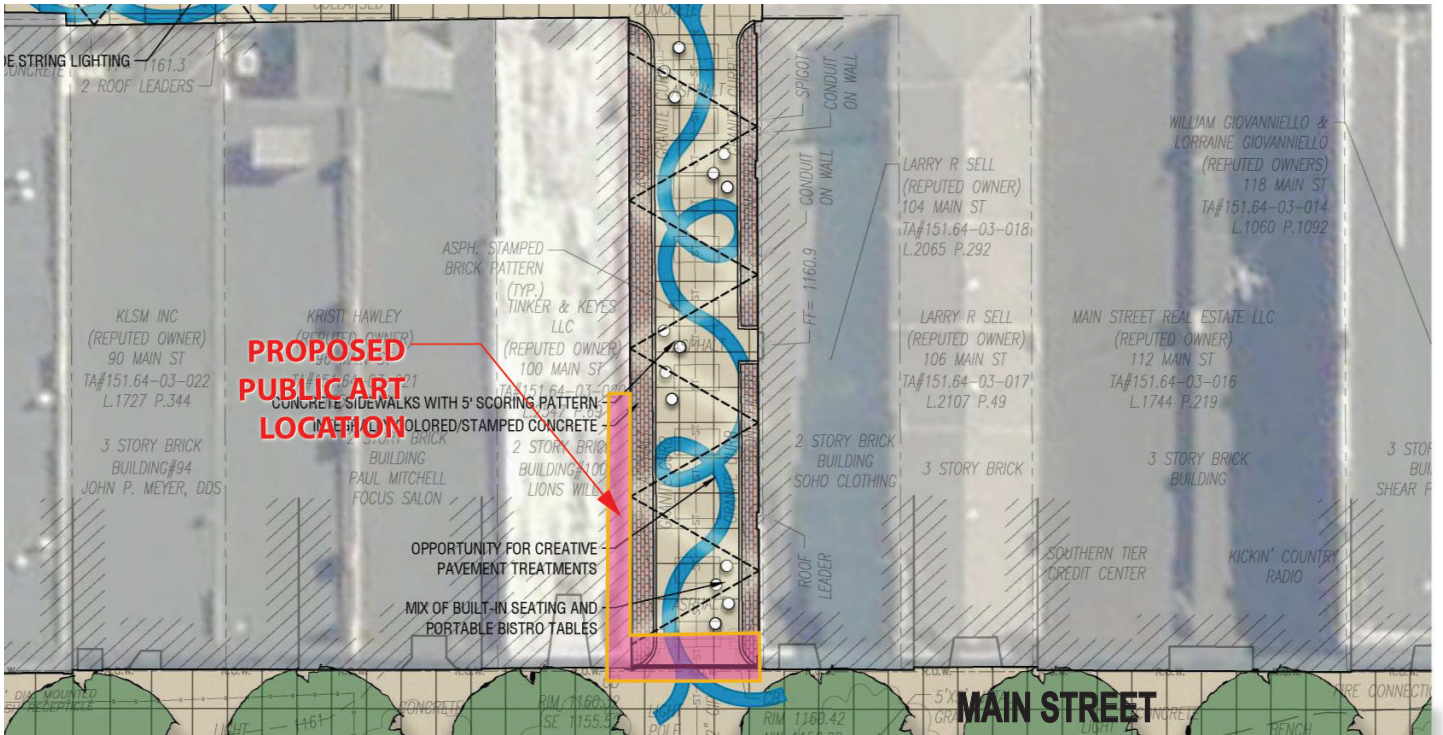
- sculpture
- maximum working area: length and depth as appropriate for mounting on a 6' diameter base; height at the artist's discretion



# City of Hornell Public Art Opportunities

## Public Art Opportunity #4:

### Pave Alley - Main Street between Seneca Street and Church Street



Proposed location - conceptual design plan

#### Potential art to consider:

- mural
- low profile wall mounted sculpture
- artistic lighting feature
- gateway feature at alley entrance on Main Street
- maximum working area: as highlighted above

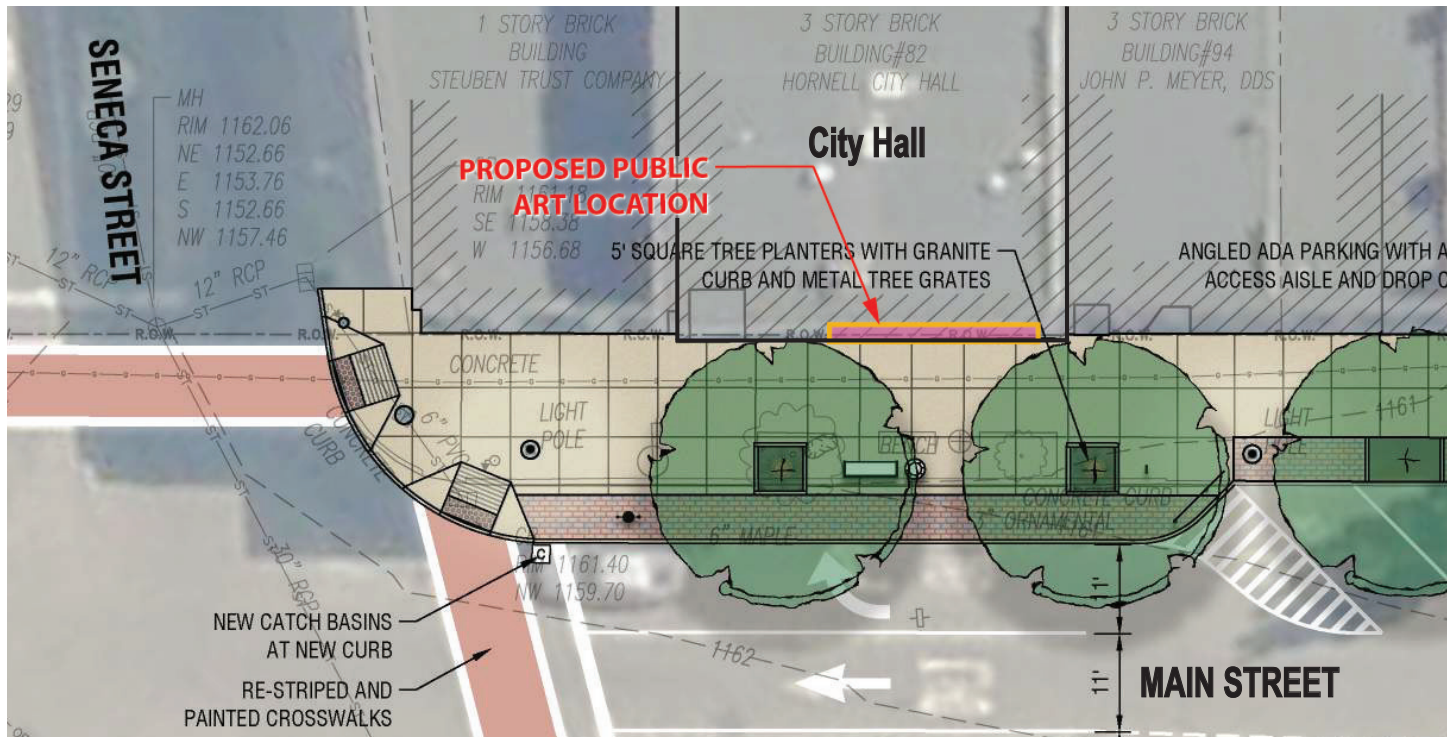


Existing conditions (before proposed alley improvements)



# City of Hornell Public Art Opportunities

## Public Art Opportunity #5: Main Street in Front of City Hall



*Proposed location - conceptual design plan*

### Desired artwork:

- mural
- subject shall be railroad, maple leaf city, or other local history theme
- palette shall be grayscale or autumnal colors like the brick tones of City Hall and the adjacent buildings
- maximum working area: approximately 20'L x 9'H

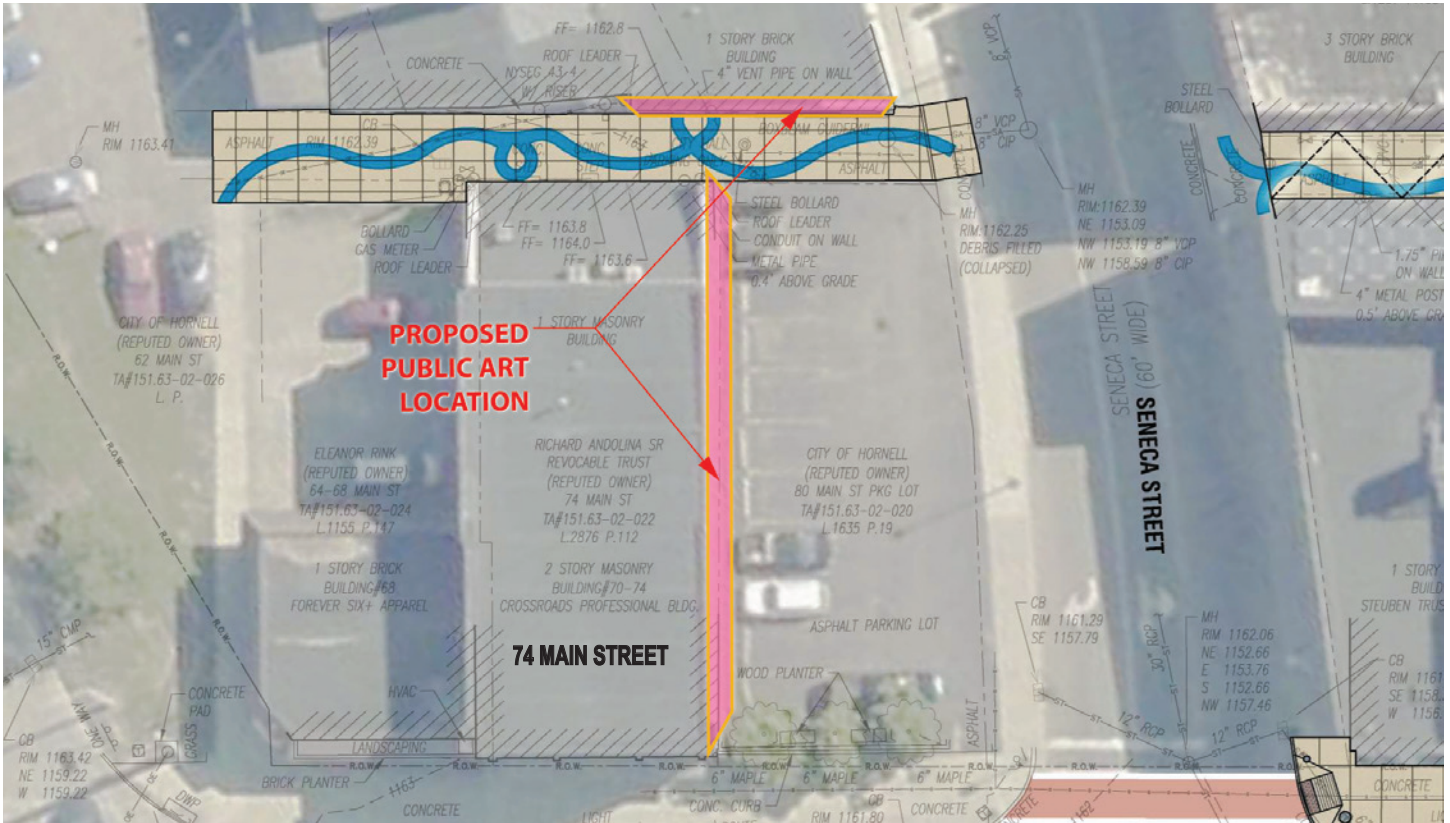


*Existing conditions (before proposed streetscape improvements)*



# City of Hornell Public Art Opportunities

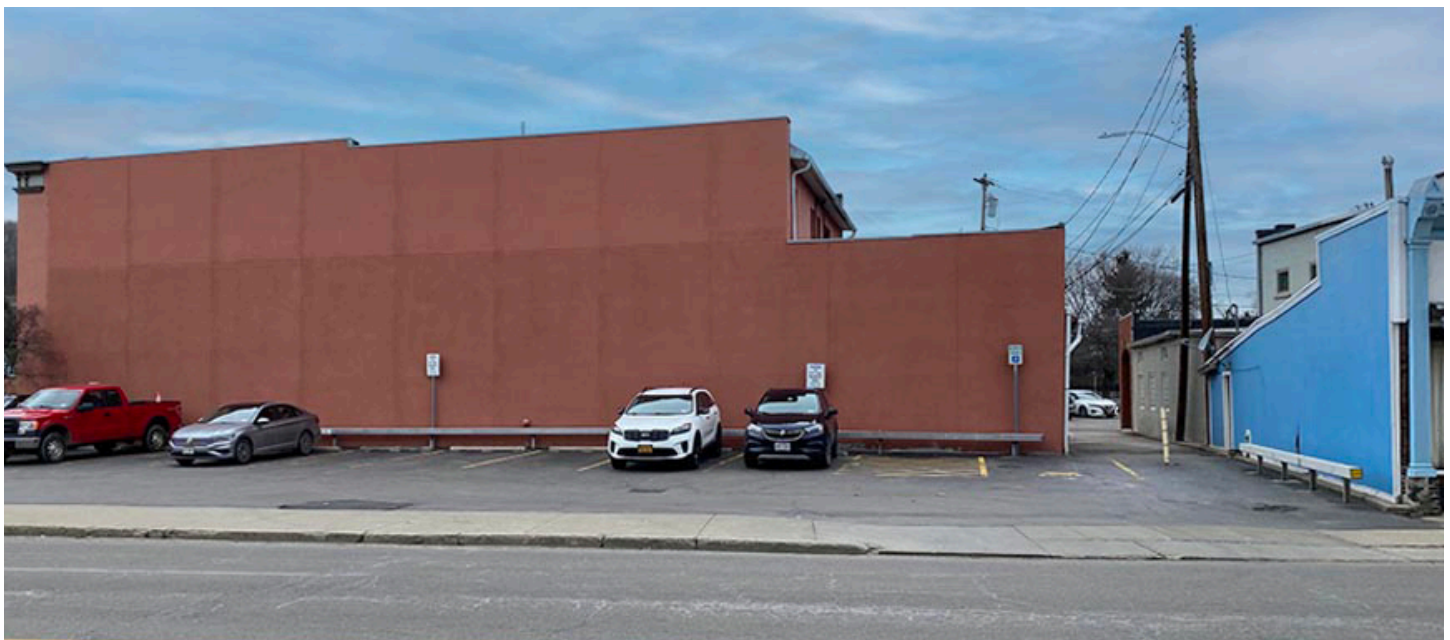
## Public Art Opportunity #6: Northwest Corner of Main Street and Seneca Street (two walls)



Proposed location - conceptual design plan

Desired artwork:

- mural
- maximum working area: one or two building faces as highlighted above



Existing conditions (before proposed alley improvements)